



CANNINGTON  
HORTICULTURAL SOCIETY



2026  
YEARBOOK



learn.grow.enjoy  
[www.canningtonhorticulturalsociety.org](http://www.canningtonhorticulturalsociety.org)

Thank you to our Corporate and Community Sponsors

# SCOTT'S

## GARDEN CENTRE

**Kevin, Pat and Alex Scott**  
[www.scottsgardencentre.com](http://www.scottsgardencentre.com)

**P 705 325 2909**  
254 Coldwater Rd. W  
Orillia, On L3V 3M3

**P 705 484 5113**  
3719 HWY 12S  
Brechin, On L0K

Present your Horticultural membership card for a 10% discount on all purchases except seeds



# EarthArt

---

## LANDSCAPES

[www.earthartlandscapesinc.com](http://www.earthartlandscapesinc.com)

1-877-272-3720



**Hill's Home Building Centre**  
488 Mara Road  
Beaverton, Ontario L0K 1A0

---

**705 426 7301**

Your donations assist the Cannington Horticultural Society to achieve its goal of beautifying our communities in both Sunderland & Cannington.  
2026 Corporate Business Partners



50 years of Landscape Architectural  
Mastery, Design and Consultation.

[www.hedgerow.ca](http://www.hedgerow.ca)



MARILYN  
ALMEIDA  
SALESPERSON

C: 905.626.3420  
O: 905 985 8558  
[realestate@marilynalmeyda.com](mailto:realestate@marilynalmeyda.com)  
[marilynalmeyda.com](http://marilynalmeyda.com)



Sunderland  
Co-operative Inc.



SUNDERLAND OAKWOOD AG CENTRE PETERBOROUGH LINDSAY  
[www.sunderlandco-op.on.ca](http://www.sunderlandco-op.on.ca)



1-800-668-2626

# Thank you to our Corporate and Community Sponsors

2025 Corporate Business Partners



705-432-2444 | www.tndf.ca

The Nourish and Develop  
Foundation

**COMMUNITY GARDEN  
& SEED LIBRARY**

LEARN MORE ABOUT OUR  
COMMUNITY PROJECTS



MEDICINAL HERBALISTS

SINCE 1984

**Faunus Herbs**

CANNINGTON, ONTARIO

"Helping and Healing for over 35 years"

705-437-4438  
WWW.FAUNUSERBS.COM



*Kent* 

**FLORIST**

**More than just a flower shop**

92 Kent St. W. Lindsay  
705 324 7314  
www.kentflorist.net @floristkent  
Fresh Florals, Body Care Products,  
Home Décor, Lush Plants & Succulents



2025 Corporate Business Partners



*Amazing quality, a variety of plants & exceptional customer service*

905 985 2672 1431 Highway 7A, Port Perry, Ontario [www.centurygreenhouses.com](http://www.centurygreenhouses.com)



**BROWN & BRETHOUR**

INSURANCE BROKERS LTD

Home - Auto - Business - Farm

Providing Superior **Protection** for Over **30 Years**

CALL 705-357-3916 OR VISIT [BROWNaNDBRETHOUR.COM](http://BROWNaNDBRETHOUR.COM)



**i**ndependent<sup>®</sup>  
YOUR INDEPENDENT GROCER

**Russell Fisher**  
Owner/operator

B30 Beaver Ave. Beaverton  
Beaverton, Ontario L0K 1A0

Tel 705 426 2598  
Email: [Russell.fisher@loblaw.ca](mailto:Russell.fisher@loblaw.ca)



 mike gibbs  
**FLORAL  
DESIGN**  
flowers and gifts

To order flowers call  
705-432-3340  
or visit [432flowers.com](http://432flowers.com)  
16 Cameron Street E.,  
Cannington

## **Brethour Financial**

### **Services Ltd.**

- Life Insurance
- Segregated Funds
- Mortgage Insurance
- RRSPs
- RRIFs
- GICs
- Critical Illness
- Disability Insurance
- Travel Insurance

**Phone: 705-357-3916**  
**Toll Free 1-800-461-1468**

**[www.brethourfinancial.net](http://www.brethourfinancial.net)**



A Country Store with  
Unique Quality



**DURHAM'S LARGEST SELECTION OF LOCALLY SOURCED FOOD**

1920 Whitfield Road, Port Perry | [info@tradingpostqualityfoods.com](mailto:info@tradingpostqualityfoods.com) | 905.982.0118



### Family Fun Featuring

9 Acre Corn Maze  
Geodesic Dome Greenhouse  
Pedal Karts  
Farm Games  
Honey, Maple Syrup, Pumpkins  
And More!!

1070 Concession Rd 5, Sunderland  
BuzzingBeesAdventureFarm.com



MARY BEERMAN  
705 879 7300

Ecosystem Consultant Practitioner Educator  
Soil Food Web Consultant

info@MaryLivingOutside.com | www.LivingOutside.ca



### Anna's Perennials

Nursery and gardens  
annasperennials.com

Anna Mizyn

705 799-0062  
annasperennials@gmail.com

63 Shoreview Road  
Lindsay, ON K9V 4R5



GREAT SMALL TOWN SERVICE

Darren Campbell

Licensed Plumber

Dcplumbingcannington@gmail.com

705-341-1376

Cannington, on  
LOE 1E0

## Keeler Automotive

BRAKES • TUNE UPS • EXHAUST • TIRES



Call 705.432.2700

6 CAMERON ST. CANNINGTON, ONTARIO



CANTER COFFEE

Two locations to serve you:

Cannington Cafe  
2 Cameron St. E.

Sunderland Coffee  
Trailer

We can't wait to welcome you.



### Stonemoor Daycare Centre Inc.

McCaskills Mills  
Infant, Toddler, Preschool  
Before & After School Programs

85 Albert St  
Cannington, ON  
LOE 1E0

Cannington Arena  
Nursery School Program

705-432-8800

705-340-8986

www.stonemoordaycare.com

sdc.cannington@bellnet.ca



**SOUTHPOINT  
EQUIPMENT**

FORMERLY KNOWN AS ROSS EDLE INC.

**TOUGH JOBS.  
NO PROBLEM.**



100 ON-12, SUNDERLAND, ON

(705) 357-3123

☎ SOUTHPTOINTEQ.CA



# Cannington Horticultural Society

Incorporated: 1975

Box 38, Cannington, ON L0E 1E0

**canningtonhorticulturalsociety@gmail.com**  
**www.canningtonhorticulturalsociety.org**



A member of the  
**Ontario Horticultural Association**  
**www.gardenontario.org**

&

**OHA District 17 www.ohadistrict17.50webs.com**

The annual membership fees are as follows: \$15 per person, \$25 per couple, \$3 per youth, \$30 for business sponsors, and \$100 (min.) for corporate sponsors. This entitles each member to receive a yearbook, the privilege of exhibiting in shows and the right to participate in Society-sponsored trips. As well, business and corporate sponsors may advertise in the annual yearbook.

General meetings and flower shows are held on the last Monday of the month at 7:30 pm, at the **Cannington Baptist Church, 60 Cameron St. W., Cannington, Ontario**. No general meetings are held in January, February, July or August. The Annual General Meeting is held in early December, in conjunction with an Awards Presentation and photographic show.

The society's programme consists of speakers offering information and tips on various horticultural subjects, an annual plant sale, open gardens or garden tours, and flower, vegetable and photographic competitions. The Society also maintains the MacLeod Park Nature Trail, main street planters in Cannington and Sunderland, and a number of gardens as part of the civic beautification within the villages of Cannington and Sunderland.

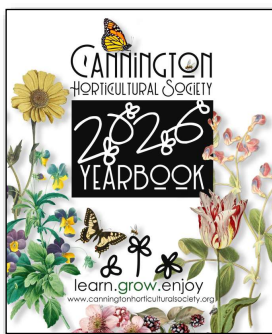
*Visitors are always welcome to attend.*

<b>Ajax Garden Club:</b> .....	<a href="http://www.gardenontario.org/site.php/ajax/">www.gardenontario.org/site.php/ajax/</a>
<b>Beaverton Horticultural Society:</b> .....	<a href="http://www.beavertonhorticultural.com">www.beavertonhorticultural.com</a>
<b>Bowmanville Horticultural Society:</b> .....	<a href="http://www.gardenontario.org/site.php/bowman">www.gardenontario.org/site.php/bowman</a>
<b>Brooklin Horticultural Society:</b> .....	<a href="http://brooklinhorticulturalsociety.com/">brooklinhorticulturalsociety.com/</a>
<b>Cannington Horticultural Society:</b> .....	<a href="http://www.canningtonhorticulturalsociety.org">www.canningtonhorticulturalsociety.org</a>
<b>Georgina-Brock Garden Club:</b> .....	<a href="http://www.gardenontario.org/site.php/georgina">www.gardenontario.org/site.php/georgina</a>
<b>Newcastle Horticultural Society:</b> .....	<a href="http://www.newcastlegarden.com">www.newcastlegarden.com</a>
<b>Orono Horticultural Society:</b> .....	<a href="http://www.gardenontario.org/soc/soc">www.gardenontario.org/soc/soc</a>
<b>Oshawa Garden Club:</b> .....	<a href="http://www.oshawagardenclub.ca">www.oshawagardenclub.ca</a>
<b>Pickering Horticultural Society:</b> .....	<a href="http://www.pickeringhorticulturalsociety.com/">www.pickeringhorticulturalsociety.com/</a>
<b>Pine Ridge Garden Club:</b> .....	<a href="http://pineridgesite.wordpress.com">pineridgesite.wordpress.com</a>
<b>Uxbridge Horticultural Society:</b> .....	<a href="http://www.uxbridgehorticulturalsociety.com/">www.uxbridgehorticulturalsociety.com/</a>

District 17 Executive Director: Debi Foster, Email: [debifoster.1956@gmail.com](mailto:debifoster.1956@gmail.com)

Durham Master Gardeners: Grace Wilton, Email: [dmgcoordinator@gmail.com](mailto:dmgcoordinator@gmail.com)

# Table of Contents



Front Cover  
Design: M. Munro  
Photo Art Graphics: C. Glendinning



"Colour My World"  
Photo: Deb Hadfield  
(Winner of 2026 Bookmark Class)

CHS Information	8
District 17 Society Information	8
2026 Executive & Board	10
Work Bees/Committees	10
President's Message	11
Club Photos	12
2026 Program and Events	13
Special Award Winners	14-15
Special CHS Events in 2026	16
Youth Program	17
Flower Show Rules	18
Exhibition Tips	19
What Judges Look For	20-21
CHS Floral Emblem	22
Native Trees	22
District 17 AGM Information	22
OHA Convention Information	23
March Meeting/Registration	23
April Meeting/Show	24-25
May Meeting/Show	26-27
June Meeting/Show	28-29
September Meeting/Show	30-31
October Meeting/Show	32
November Workshop	33
CHS Annual General Meeting	34
Photographic Competition Rules	35
Secretary's Report	36
Financial Statement	37
Thumbs Up Garden Winners	38
Corporate & Business Members	2-7
Corporate & Business Members cont.	39-44

learn.grow.enjoy with CHS

# 2026 Executive & Board of Directors

President	<b>Margaret Munro</b> marg@lakewindsfarm.com	705 928 4924
Secretary	<b>Kelly Gibson</b> kelly.b.gibson@gmail.com	905 718 4408
Treasurer	<b>Justine Polsinello</b> justinepolsinello@gmail.com	250 317 0727

Board meetings are held as called at 7:00 p.m. No board meetings are held in August or December.

Mary Beerman	info@marylivingoutside.com
Sherry Dodson	sherrydodson936@gmail.com
Heiko Mantik	heiko.mantik@yahoo.ca
Cria Pettingill	criapettingill@gmail.com
Cheryl Richards	bcabclr@gmail.com
Stephanie Smith	stephaniesmith03@yahoo.ca
Youth Rep: Claira Yates	

## CHS 2026 Work Bees/Committees

<b>Civic Beautification</b>	Help out with one of our civic gardens, watch for work bee dates and join us in making our communities beautiful!
<b>Finance</b>	Justine Polsinello
<b>Financial Reviewers</b>	Angela Hennessey, Christine Reid
<b>Flower Shows</b>	Angela Hennessey, Laurie Benson, Stephanie Smith
<b>Membership</b>	Cheryl Richards
<b>Nature Trail</b>	Watch for work bee dates and sign up to volunteer
<b>Tree Planting</b>	Watch for work bee dates to plant trees
<b>Plant Sale</b>	Join in to help with this important fundraiser
<b>Photography</b>	Deb Hadfield, Jackie Bradshaw, Laurie Benson
<b>Program</b>	Board of Directors
<b>Publicity</b>	Marg Munro, Justine Polsinello
<b>Social</b>	Members -food providers for the month -sign up to help
<b>Website/Newsletter</b>	Marg Munro
<b>Yearbook</b>	Marg Munro, Margaret Crammond
<b>Youth Coordinators</b>	Mary Beerman, Stephanie Smith <b>Youth Rep:</b> Claira Yates
<b>Meeting Setup</b>	Stephanie Smith -lend a hand - volunteer to help

*Special Thanks to the*

**Cannington Baptist Church**

for their community spirit and use of their wonderful space for our meetings.

# President's Message 2026

*“Gardening stretches our sense of time beyond our own enjoyment. It reminds us that some of the most meaningful things we plant are acts of generosity: for children, neighbours, wildlife, and futures we’ll never personally see.”*

*- Kayleigh Dray*

Gardening is more than just plants; it involves patience, hope, and time. Nature moves at its own pace, requiring us to follow its lead.

Reflecting on our 50th Anniversary in 2025, we are incredibly grateful to our members, past and present, who dedicated their time, imagination, knowledge, and hard work to building this club over the last five decades. We encourage you to visit our commemorative "Heart Bench," installed on August 1, 2025, near the CHS civic gardens in MacLeod Park, Cannington. Please take a moment there to rest and enjoy one of our club's treasures.

Our club is proud to carry forward these past accomplishments while continuing to bring new ideas, education, and opportunities to our membership. We invite you to explore and participate in the upcoming activities outlined in this yearbook.

As spring approaches, it is time to begin your garden dreams for 2026. While last year's dry conditions were challenging, we continue to learn and adapt to changing environments. There is no better way to navigate these challenges than by learning from the shared experiences of fellow horticulturists. We encourage you to get involved, volunteer, and share your skills that we may enjoy a rewarding season together.

*Margaret Munro*

learn.grow.enjoy with CHS

*'The Heart Bench' Original creation commemorating CHS 50th Anniversary Installed by blacksmith artist Mark Puigmarti*

*Floral Arrangement by Life Member Angela Hennessey*



*Golden Garden Party Cake Cutting  
Presidents: J. Nowakowski, M. Munro & D. Real*



*Anniversary Garden Party - Bio-Blitz Hike*



*July 12, 2025 Golden Garden Party  
Native Plant Walk & Talk*

# 2026 Program & Events

All general meetings: 7:30pm at the **Cannington Baptist Church, 60 Cameron St. W.**  
*\*unless otherwise noted\**

- March 21      **Seedy Saturday**  
Co-Hosted by Cannington & Georgina-Brock Horticultural Clubs  
Pefferlaw Lions Community Hall, Pefferlaw (9 am - 2pm)
- March 30      **The Art of Garden Design** - Laura Lowe
- April          **OHA District 17 AGM** (see page 22 for details)
- April 27      **Mushrooms - Wild & Wonderful** - Julia Tchervova & John Caswell
- May 25        **Harvesting Health & Healing: Horticultural Therapy** - Sherry Dodson  
**Youth Challenge: Grow Your Own Dinner**  
(see page 17 for details)
- May 30        **Plant Sale 9 am-1pm**, Open to public, plant donations welcomed  
Brock 2020 Gardens, 199 Laidlaw St. N., Cannington
- June          **Thumbs Up Gardens** ~ Selection of 8 Local Private Garden Winners
- June 29      **Working In Natives** - Native Plants in Claremont
- July 24-26    **OHA Convention** - Durham College, Oshawa  
Open to all OHA Members - Speakers, Workshops, Competitions, Tours  
Tickets required. See page 23 for more details.
- Summer      **Workshops** - Several unique workshops are in the works -see page 16  
Check website for more info and how to register
- Sept. 28      **Seed Saving for All** - Jillian Bishop
- Oct. 26      **Learning Lessons from the Youth** - CHS Youths Demo  
**Award Presentation for Youth Challenge**
- Nov. 16      **Seasonal Workshops: 'Dogwood Wreath'** with Sandy Wasiluk  
Plus **'Botanical Art'** with Bert Liverance
- Dec. 7        **CHS AGM, Award Presentation and Photography Show** - 7pm  
Festive Refreshments  
Election of Board of Directors

# Special Award Winners

## President's Award

2018	Flower Show Committee: M. Nicolle, A. Hennessey, L. Benson, M. Crammond	2022	Neil & Carolyn Turnbull
2019	Dan & Sandra Galea	2023	Deb Hadfield
2020-21	not awarded	2024	Jan Teel
		2025	Youth Chairs: Mary Beerman & Claira Yates

## Service Certificate

2014	Marg Real	2022	John Nowakowski
2015-16	not awarded	2023	Sandy Jeronimo
2017	Russ Burton	2024	Carole Ditomaso
2018-21	not awarded	2025	Margaret Crammond

## Victoria & Grey Trophy (originated 1976) For Most First Prizes

2015-19	Marie Nicolle
2020-21	not awarded
2022	Laurie Benson, Marg Munro (tie)
2023-24	Marg Munro
2025	Angela Hennessey

## CHS Trophy (originated 1981)

For Highest Points - All Classes

2017-19	Marie Nicolle
2020-21	not awarded
2022	Angela Hennessey
2023	Marg Munro
2024	Carl Bonk
2025	Angela Hennessey

## High Point Photography

2017	Monique & Carl Bonk
2018-19	Suzanne Catty
2020-21	not awarded
2022-24	Pat Rose
2025	Deb Hadfield

Complete listing of winners from past seasons may be found on club website [www.canningtonhorticulturalsociety.org](http://www.canningtonhorticulturalsociety.org)

Award System	1st	2nd	3rd	Best Of Show
Specimen Classes	5 points	4 points	3 points	10 points
Decorative Classes	6 points	5 points	4 points	20 points
Photography	12 points	10 points	8 points	20 points

**Cowan Rose Basket**  
 (originated 1976) for Best Rose in Rose Show  
 donated by Mrs. Jean Cowan

2015-19	Marie Nicolle
2020-21	not awarded
2022-23	Sandra Galea
2024	Anne Hardy
2025	Marg Munro

**Gloria Spellen Award**  
 (originated 2006)

A \$20.00 cash award for Highest Points - Design

2017	Angela Hennessey
2018	Sandra Galea
2020-21	not awarded
2022	Angela Hennessey
2023	Marg Munro
2024-25	Angela Hennessey

**Budding Botanist Award**  
 (Originated 2019)  
 Highest Points Youth Member

2019	Claira & Colleen Yates (tie)
2020-21	not awarded
2022	Claira Yates
2023	Colleen Yates
2024-25	Catharine Brouwer

High Point Photography: D. Hadfield | Vic & Grey Trophy: A. Hennessey | Gloria Spellen Award: A. Hennessey



CHS 2025 Photography Class winners | Budding Botanist Award: Catharine Brouwer

# Special Events



U-PICK PLANT SALE

## **CHS Plant Sale & Fundraiser** **Saturday May 30, 9am to 1pm** **Brock 2020 Gardens, 199 Laidlaw St. N.** **Cannington**

An amazing plant sale run by CHS members offering a wide variety of home grown perennials, annuals, seedlings, fruit stock, trees, garden items and more! Donations accepted on Friday May 29- please drop off your potted & labeled items any time prior to our Saturday morning start at Brock 2020 Gardens. Volunteers needed and welcomed to assist! Get involved and be part of the fun.



## **Haskap U-Pick with Buzzing Bees** **Thursday July 9, 4 to 7pm** **Special Offer to CHS Members**

Come out and experience the delight of picking fresh haskap berries. Unique flavour and excellent nutrition. A little like blueberries - but even better! All CHS members receive a discount price. Tour of the Biosphere included! A fun evening at Buzzing Bees Adventure Farm, Sunderland.



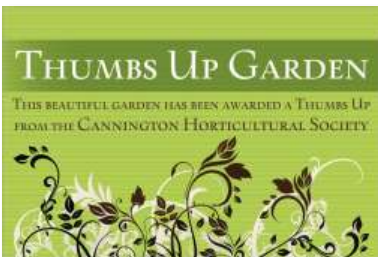
WORKSHOPS

## **Mushroom Log Workshop with Mike Cicerella** **Saturday August 29 pm 1pm** **Pre-Register for this unique workshop.**

Join Mike Cicerella for a workshop on how to prepare and inoculate wood logs with mushrooms. Through a presentation and hands on activities, you will learn how to grow your own mushrooms at home. Participants will have the opportunity to choose from various types of mushrooms. This is a great chance to explore the world of fungi and gain the skills needed to start your own crop.

## **Garden Art Mushrooms & Birdbath Workshop** **with Heather Benjamin** **Dates to be determined - Registration required**

Enjoy a hands-on workshop in a beautiful garden, creating cement garden art: choice of rhubarb-leaf mushrooms, birdbaths or stepping stones. Two part workshop. Watch for more details on club website!



AWARDS

## **Thumbs Up Garden Award**

Back for 2026 with eight private gardens to be chosen for recognition. Our committee starts looking for the best 'front yards' in Sunderland, Cannington and surrounding areas during spring with only eight winners picked and awarded in mid-June. Besides bragging rights, winners receive one CHS membership and a lawn sign announcing their achievement. This is a very popular award and new gardens are picked each year, so get your gloves on and spruce up your curb appeal—you never know who may be looking.

# 2026 Youth Program & Events

## CHS Youth Program

We are excited to announce that our youth gardening program is back for another great growing season! Geared towards young people aged 6-17, the program offers a variety of engaging workshops, challenges, and hands-on learning experiences.

Registration is only \$3 per youth. Sign up and let the gardening adventure begin! Register by May 25.

### “GROW YOUR OWN DINNER”

#### Digging into the secret ingredients of natural nourishment

A summer garden challenge involving growing select food items that will be used in the creation of a meal. In August and September all gardens and food dish will be judged. Have fun and learn about growing food and using it in a meal.

#### Youth 2026 Workshops include:

- Feb 25: Winter Sowing
- March 25: Botanical Drawing
- April 22: Garden Mapping
- May 30: Carden Alvar Hike
- June 17: Compost Workshop
- June: Haskap U-Pick
- July 15: Garden Food Tour
- Aug: Garden Adjudication
- Sept: Buzzing Bee Maze Tour
- Oct 26: Youth Presentation & Awards

**More details available at any of our meetings - sign up and get growing with the CHS Youth Program.**

**Youth Chairs: Mary Beerman, Stephanie Smith**

**Youth Rep: Claira Yates**



**....a gardener!**



Poster by youth member:  
Claira Yates



Photo by Youth member:  
Catharine Brouwer  
Youth Bookmark

# Flower Show Rules

Judging is based on ***Ontario Judging and Exhibiting Standards (OJES) for Floral Design and Horticulture, 2019 edition.***

1. Competitions are open to amateur horticulturists: those who grow plants for pleasure only.
2. Exhibitors must be members of the Cannington Horticultural Society. Membership may be obtained from the membership chair up to the time of the show. Shows are open to all current members.
3. A member assigned an exhibitor's number in a previous year should continue to use that number. Members who have not exhibited previously should obtain an exhibitor's number from the flower show committee chair. To help speed the work of setting up the shows, members should aim to fill out their entry cards ahead of time and have their exhibits ready for placement, with completed cards, upon arrival at the show room. Cards may be obtained at any prior meeting.
4. No competitor may place more than one entry in any given class unless otherwise stated. Where multiple entries *are* permitted (e.g., in some specimen classes), they must be different varieties/cultivars. See individual show schedules for further details.
5. Entries must be in place by the time stated in the flower show program.
6. All specimens must have been grown by the exhibitor and must have been their own bona fide property for at least three months before the show date. Potted plants must have been established in pots at least one month prior to the show.
7. Houseplants that have won a first prize in any one show cannot be entered in another show of the same year.
8. African violets (*Saintpaulia*) may be single-crowned or multi-crowned.
9. Where a number of specimens is specified in the show schedule, neither more nor less than that number shall be exhibited. Specimens (except *Narcissus*, *Hemerocallis*, and *Hosta* classes) should include their own foliage, attached, unless otherwise stated.
10. Exhibitors must supply their own containers. Clear, uncoloured glass is required for specimen classes, such as glass bottles, vases, or jars (labels removed). All containers must be stable. Exhibits, personal property, vases, baskets, etc., are at the risk of the exhibitor. The Society will not be liable for any loss.
11. No flowers in the specimen classes may be supported by ties, wire, etc. Any mechanics used in the design classes must not be visible. Fruit and vegetable specimens shall be displayed on an appropriately sized china plate, provided by the Society, unless otherwise stated; large pumpkins and squash excepted.
12. All design entries must be the work of the exhibitor, and the plant material used in them may be obtained from any source. No artificial plant material may be used. Accessories (inorganic objects used in a subordinate manner to enhance a design of plant material) are permitted only when specified. Organic objects such as fungi, decorative wood, etc., are not considered accessories.
13. Diseased, lousy, scaly, or otherwise unhealthy plants will be disqualified upon arrival.

14. No awards shall be given for classes in which all exhibits are deemed to be of mediocre quality.
15. The show committee has full charge of staging. Specimens may be placed by the exhibitor or any show committee member. **The exhibitor may not move another entry to provide a place for their own.** (Ask for help from a show committee member.) Design class entries shall be placed by the exhibitor; they may be moved by a show committee member when necessary.
16. Only persons designated by the show committee will be permitted to be in the show area while entries are being judged. The decisions of the judge (or judges) are final.
17. Youth members may enter Youth Division classes only, and must possess a valid youth membership.

## Exhibition Tips

The *Ontario Judging and Exhibiting Standards (OJES) for Floral Design and Horticulture*, 2019 edition, is the recommended reference guide for exhibiting in Ontario. Copies may be obtained by ordering online at [gardenontario.org](http://gardenontario.org). Another excellent guide is *The Encyclopedia of Judging and Exhibiting Floriculture and Flora-Artistry* by Esther Veramae Hamel.

**Always follow the show schedule and rules, and name specimens whenever possible.**

Ensure the correct number (and colour) of specimens (or blooms) is exhibited. Note that a bud showing colour is counted as a bloom, so consider this when the class specifies a particular number.

Conditioning or hardening helps plants absorb water after cutting and will preserve freshness of specimens longer.

- Pick in early morning or late evening; cut more blooms than required. Cut stems cleanly on a slant using a sharp, clean knife or shears.
- Remove lower leaves; upper foliage must be attached unless otherwise stated. Place stems in warm water for at least 3 hours (or overnight). Store in a cool, dark, humid, draft-free area.
- Some cut flowers, foliage, and woody plants do not absorb water easily and require further treatment to prevent wilting. Examples include chrysanthemums, lilies, roses, dahlias, rudbeckia, narcissus, peonies, poppies, and tulips. See *OJES* pp. 20–22 and *The Encyclopedia of Judging and Exhibiting* pp. 43A–43D or search online for information on conditioning specific plants.

Sources: *Ontario Judging and Exhibiting Standards for Floral Design and Horticulture* (2019), and *The Encyclopaedia of Judging and Exhibiting Floriculture and Flora-Artistry*.

# What Judges Look For

*An overview of the elements that judges consider when evaluating horticultural and design exhibits.*

## **Horticulture Division**

**Balance** is the arrangement of the leaves and florets on the stem. The balance should be even and pleasing.

**Colour** should be typical of the cultivar. Variegation should be true for the cultivar.

**Condition** is the actual physical appearance of the entry at the time of judging. Specimens that are over-mature are not of good exhibition quality.

**Distinction** is marked superiority in all respects – it is better, closer to perfection than any other specimen.

**Floriferousness** is the abundance of blooms/fruits.

**Form** is the overall shape of the plant, flower, leaf, and/or stem. It should be characteristic of the cultivar.

**Grooming** is the removal of any evidence of spray, dust, insect damage, or foreign materials, and of any faded or wilted petals or leaves.

**Labelling** should be neat and legible with the correct botanical/common name and cultivar.

**Size** should be normal for a well-grown specimen of the cultivar exhibited.

**Stem and foliage** should be in good proportion to the flower(s). The stem should be sufficiently strong to support the bloom(s). Only attached foliage is permitted unless otherwise stated.

**Substance** refers to the quality of firmness of a flower or leaf that enables it to retain its characteristic form, freshness, and colour.

**Texture** is the surface quality of plant materials, their smoothness or roughness.

**Uniformity** When two or more specimens of a given cultivar are shown as one entry, they should be as uniform as possible in size.

## **Design Division**

**Balance** is the visual stability from any angle or any dimension. A balanced design does not appear top-heavy, bottom-heavy, or lopsided.

**Rhythm** is the visual path that suggests motion in the design accomplished by the repetition of an element at regular or irregular intervals. This can be expressed in line, form, colour, spacing between flowers or the simple repeating of curves or planes within a composition.

**Proportion** is the relative amount of one area to another: e.g., the amount of plant material to the container, the amount of round forms to linear forms, the amount of rough texture to smooth.

**Scale** is the size relationship of all components: e.g., the size of one flower in relation to another, etc.

**Contrast** is difference. Achieved by placing opposite or unlike elements together in such a way as to emphasize difference.

**Dominance** is the force of one element, implying subordination of another or others.

—Adapted from the Ontario Horticultural Association

Flower Show Winners from 2025



'Woodland Gathering' by S. Galea



'Happy 50th' Best in Show by A. Hennessey

<b>SCALE OF POINTS</b>	
<b>Design Classes</b>	
<b>Design</b>	35
<b>Conformance</b>	25
<b>Creativity</b>	20
<b>Distinct Condition</b>	20
	100
<b>Specimen Classes</b>	
<b>Cultural Perfection</b>	
Form and symmetry	20
Size of plant according to cultivar	10
Foliage; healthy and unblemished	10
Grooming	10
<b>Flowers or Fruit</b>	
Quality, peak of perfection	10
Floriferousness	15
Colour	5
Size	5
<b>Distinction</b>	
<b>Named</b>	5
	100



### Club Floral Emblem



#### Common Bleeding Heart (*Lamprocapnos spectabilis*)

The common bleeding heart, a favourite garden perennial, arrived here from northeast Asia in the 19th century. The deeply cut blue-green fernlike foliage appears in mid to late spring, followed by graceful arching stems with rose-coloured blooms. The outer pair of flower petals forms the "heart" and the inner the "drop of blood" as the spurs open to reveal the stamens. By midsummer, the foliage dies back in all but the most favoured shady locations, so it's best overplanted with annuals or other perennials nearby to keep colour throughout the season.

Preferring light shade and well-drained soil supplemented with peat moss or leaf mould, the plant can grow to be three feet tall, and usually has a long life. It can tolerate full sun if the soil is moist.

Sow seeds in cold frames in the fall, or divide established plants in late winter, when the plant is dormant.

There are also several native North American bleeding hearts (genus *Dicentra*), including *D. formosa* (Pacific bleeding heart) in the west and *D. canadensis* (squirrel corn) in the east.

Plant a tree and enjoy for years to come



#### Tulip-tree *Liriodendron tulipifera*

A tall massive deciduous tree, one of the most beautiful eastern hardwoods. Tall straight tree with large showy yellow-orange flowers resembling tulips or lilies.

- Height:** up to 35 m
- Maximum age:** 150 years
- Hardiness:** zone 5
- Exposure:** full sun to partial shade
- Soil:** deep, rich, moist soils



#### Bur oak *Quercus macrocarpa*

A medium-large stately tree that is drought tolerant, and provides edible acorns to feed wildlife. Has very thick corky bark and deep-

growing roots. Does require at least two bur oak trees for acorn production to occur.

- Height:** 35-40 m
- Maximum age:** 400 years
- Hardiness:** zone 3
- Exposure:** full sun, tolerates moderate shade
- Soil:** grows in a variety of soils

## OHA District 17 Annual General Meeting Saturday April 25, 2026

**Club Carib, 600 Wentworth St. E. Oshawa  
9am - 12 noon**

**Guest Speaker: Eric Tuinman presents 'Gardenize'**  
Learn how to journal & catalogue your gardens  
More info to be announced - plans are in the works.

# Registration & Meeting

March 30, 2026

Cannington Baptist Church, 60 Cameron St. W., Cannington, ON  
Open to Public at 7pm. Meeting 7:30pm.

**7:30 pm Featured Speaker: Laura Lowe**  
**'THE ART OF GARDEN DESIGN'**

**Member Registration Open at 7pm, Guests Always Welcome**

Get ready for a fantastic season of learning and fun with CHS! Our first meeting features local landscape designer Laura Lowe, from Earthart Landscapes.

Laura brings extensive experience and a unique perspective to landscaping, with a portfolio ranging from small private gardens to large-scale estates. This is a wonderful opportunity to learn the art of garden design and pick up practical tips and ideas for your own gardens.

We invite you to renew your membership with CHS tonight. Get ready for a fun season with photo and flower shows, events, workshops and much more.

---

## Come Join Us!

Hosted by our District 17 and  
District 4



Be part of the fun  
this summer  
in Oshawa!

Please check  
[www.gardenontario.org](http://www.gardenontario.org)  
for details

A three day convention featuring  
special guest speakers, tours,  
workshops & more.

ONTARIO HORTICULTURAL ASSOCIATION  
118TH ANNUAL GENERAL MEETING & CONVENTION  
Hosts: Districts 4 & 17



**Garden Ontario™**

# Flower Show & Meeting

April 27, 2026

Cannington Baptist Church, 60 Cameron St. W., Cannington, ON  
Entries received 6:30–7:00 pm. Open to public 7:00 pm.

**7:30pm Guest Speaker: Julia Tchervova & John Caswell**

## 'MUSHROOMS - WILD & WONDERFUL'

*New exhibitors! Don't be shy! Take the leap! You'll be glad you did!*

*See pages 18–21 of this book for Show Rules, Tips, and What Judges Look For.*

*Questions? Contact show chair Angela Hennessey: [angrichennessey@gmail.com](mailto:angrichennessey@gmail.com) 705 432 3053*

### **HORTICULTURE DIVISION**

*Multiple entries permitted per exhibitor per class if different.*

*Remember: Give the botanical and/or common name and cultivar whenever possible!*

#### **Section A – Bulbs**

1. Daffodil (*Narcissus*)..... 1 scape, trumpet type  
(cup is as long or longer than petals)
2. Daffodil (*Narcissus*)..... 1 scape, large-cupped type  
(cup is more than one-third but less than full length of petals)
3. Daffodil (*Narcissus*)..... 3 scapes, all different varieties
4. Hyacinth (*Hyacinthus*)..... 1 stem, any colour or variety
5. Tulip (*Tulipa*) ..... 1 stem, any type, any colour
6. Any other bulb or tuber..... 3 blooms or stems

#### **Section B – Perennials**

7. Branch, flowering ..... maximum 76 cm from top of container
8. Branch or vine, foliage only ..... showing only foliage, max. 76 cm from top of container
9. Hellebore (*Helleborus*) ..... 1 stem, any colour
10. Any other perennial ..... 1 or 3 stems, one variety

#### **Section C – House Plants**

11. African violet (*Saintpaulia*)..... in bloom
12. Orchid (*Orchidaceae*)..... named
13. Any other house plant..... named

## DESIGN AND SPECIAL EXHIBITS DIVISION

### Section D – Individual Designs

*Accessories permitted unless otherwise specified.*

14. *Wild and Wonderful* ..... your interpretation
15. *I'm a Fun Guy* ..... small arrangement (14 cm – 25.4 cm)
16. *Spring Awakening* ..... medium design (25.4 cm – 60 cm)

### Section E – Special Exhibits

17. Seedlings, flower ..... 4 specimens, same variety, for transplant, named
18. Seedlings, vegetable ..... 4 specimens, same variety, for transplant, named
19. Sustainable native plant ..... 1 specimen, named

## YOUTH DIVISION

20. **Horticulture:** ..... any garden flower, 1 specimen, named
21. **Design:** *Not Mush Room Inside...* an arrangement in a small container of your choice

**Looking for a fun summer challenge for younger ones? Check out the CHS Youth Program - see page 17 for more details. Get signed up by May 25! A great way to learn more about growing food, pollinators, soil, nature hikes and more!! *Get growing with CHS!***



*Look deep into nature and then you  
will understand everything better”*

*- Albert Einstein*

# Flower Show & Meeting

## May 25, 2026

Cannington Baptist Church, 60 Cameron St. W., Cannington, ON  
Entries received 6:30–7:00 pm. Open to public 7:00 pm.

7pm ~ **Youth Challenge: 'Grow Your Own Dinner'**

**7:30 pm Featured Speaker: Sherry Dodson**  
**'HARVESTING HEALTH & HEALING:**  
**HORTICULTURAL THERAPY'**

*See pages 18–21 of this book for Show Rules, Tips, and What Judges Look For.*

*Questions? Contact show chair Angela Hennessey: [angrichennessey@gmail.com](mailto:angrichennessey@gmail.com) (705)432-3053*

### **HORTICULTURE DIVISION**

*Multiple entries permitted per exhibitor per class if different.*

*Remember: Give the botanical and/or common name and cultivar whenever possible!*

#### **Section A – Flowering Shrubs**

1. Lilac (*Syringa*)..... 1 stem, max. 40 cm from top of container
2. Any other flowering shrub or tree .. 1 stem, max. 76 cm from top of container

#### **Section B – Irises (*Iris*)** *Note: Include own leaf, not necessarily attached.*

3. Iris, tall bearded..... 1 stem; any colour
4. Iris, any other type..... 1 stem, any colour

#### **Section C – Tulips (*Tulipa*)**

5. Tulip, parrot ..... 1 stem, any colour
6. Tulip, fringed ..... 1 stem, any colour
7. Tulip, double..... 1 stem, any colour
8. Tulip, any other ..... 1 stem

#### **Section D – Perennials**

9. Bleeding heart (*Lamprocapnos*)..... 1 spray, pink
10. Bleeding heart (*Lamprocapnos*)..... 1 spray, any other colour
11. Columbine (*Aquilegia*)..... 3 stems
12. Hosta ..... 1 leaf
13. Primrose (*Primula*) ..... 1 bloom
14. Any other bulb or tuber ..... 1 bloom or stem
15. Any other perennial or biennial..... 3 or 5 blooms
16. Any other perennial or biennial..... 1 spray or spike

## Section E – Vegetables and Herbs

*Plates for vegetable entries will be supplied by the Society.*

- 17. Rhubarb..... 3 stalks; pulled not cut, base untrimmed, leaves trimmed to fan shape of approx. 5 cm
- 18. Asparagus..... 3 spears; stalks approx. 20 cm long, buds at top of stem with well-closed scales, no white showing at base
- 19. Any other vegetable..... 3 specimens
- 20. Any native herb..... 3 stems, in water, named

## Section F – House Plants

- 21. House plant with a story..... named, with brief story attached

## DESIGN AND SPECIAL EXHIBITS DIVISION

### Section G – Individual Designs

*Accessories permitted unless otherwise specified.*

- 22. *Green Healing*..... your interpretation
- 23. *Reach for the Sky*..... a vertical design (“in which components are arranged on an axis perpendicular to the horizon” —*OJES* p. 156)
- 24. *Flower Child*..... a miniature design (“no more than 12.7 cm in height, width, and depth including any container, base, and/or accessories” —*OJES* p. 145)

## YOUTH DIVISION

- 25. **Special Exhibits**..... seedlings, 3 specimens of same variety, named
- 26. **Design: Happy Mother’s Day**..... a bouquet of named flowers



*Flowers always make people better, happier and more helpful, they are sunshine, food and medicine for the soul.”*

— Luther Burbank

*Entries for the June photography show may be given to any member of the photography committee until **Monday, May 25, 2026**. Please see Photographic Competition Rules, p. 35. Prints may be digital or film in origin.*

# Flower Show & Meeting

## June 29, 2026

Cannington Baptist Church, 60 Cameron St. W., Cannington, ON  
Entries received 6:30–7:00 pm. Open to public 7:00 pm.

### 7:30pm Guest Speaker: Native Plants in Claremont **WORKING IN NATIVES**

See pages 18–21 of this book for Show Rules, Tips, and What Judges Look For.  
Questions? Contact show chair Angela Hennessey: [anrichennessey@gmail.com](mailto:anrichennessey@gmail.com) (705)432-3053

#### **HORTICULTURE DIVISION**

*Multiple entries permitted per exhibitor per class if different.*

*Remember: Give the botanical and/or common name and cultivar whenever possible!*

##### **Section A – Roses (*Rosa*)**

1. Hybrid tea ..... 1 stem, any colour
2. Climber or rambler ..... 1 spray, any colour
3. Miniature ..... 1 stem or spray, any colour
4. Roses, same cultivar ..... 3 blooms, in a vase, to show cycle of bloom:  
1 bud  $\frac{1}{4}$  open, 1 bud  $\frac{1}{2}$  open, 1 bloom fully open
5. Floating ..... 1 bloom, in a rose bowl
6. Any other rose ..... 1 stem or spray

##### **Section B – Perennials and Vines**

7. Clematis ..... 1 bloom
8. Coral bells (*Heuchera*) ..... 3 stems, leaves, same cultivar
9. Daylily (*Hemerocallis*) ..... 1 stem
10. Delphinium ..... 1 spike, any colour
11. Fern ..... 1 frond
12. Hosta, 1 cultivar ..... 3 leaves
13. Hosta, different cultivars ..... 3 leaves (1 leaf from 3 different cultivars)
14. Peony, single, Japanese, or anemone ..... 1 bloom
15. Peony, semi-double or double ..... 1 bloom
16. Peony, tree ..... 1 bloom
17. Any other bulb or tuber ..... 1 bloom or stem
18. Any other flowering shrub ..... 1 bloom or stem
19. Any other perennial or biennial ..... 1 spray or spike
20. "Gardener's choice" ..... 1 bloom or stem not listed above

## Section C – Vegetables, Fruit, and Herbs

*Plates for vegetable and fruit entries will be supplied by the Society.*

- 21. Any leafy vegetable ..... 3 specimens, same cultivar, in water
- 22. Berries from a native plant ..... group of 5 (see *OJES* p. 109)
- 23. Garlic scapes ..... 3 specimens
- 24. Green onions ..... 3 specimens
- 25. Herbs ..... 3 different herbs, cut, in water
- 26. Rhubarb ..... 3 stalks (see May instructions)

## DESIGN AND SPECIAL EXHIBITS DIVISION

### Section D – Individual Designs

*Accessories permitted.*

- 27. *Big, Bold, and Beautiful* mass design, traditional (“a large quantity of plant material arranged with a closed silhouette having few or no voids” — *OJES* p. 144)
- 28. *Prom!* ..... a corsage
- 29. *Native Land* ..... a medium design (25.4 cm – 60 cm) featuring native plants and natural materials

### Section E – Photographic Prints

*Entries may be given to any member of the photography committee until **Monday, May 25***

**2026.** *Please see Photographic Competition Rules, p. 35. Prints may be digital or film in origin.*

- P1. Black & White Image
- P2. Purple & Yellow
- P3. Garden Visitors
- P4. Native
- P5. Humorous Horticulture
- P6. Agriculture

## YOUTH DIVISION

- 30. *Gardening from the Ground Up* .... something grown using your own compost
- 31. **Design:** *For the Pollinators* ..... a flat mosaic butterfly design using flowers and foliage

### Youth Photographic Prints

*Entries may be given to any member of the photography committee until **Monday, May 25,***

**2026.** *Please see Photographic Competition Rules, p. 35. Prints may be digital or film in origin.*

- Y1. Garden Visitors
- Y2. Pollinators in the Garden

# Flower Show & Meeting

## September 28, 2026

Cannington Baptist Church, 60 Cameron St. W., Cannington, ON  
Entries received 6:30–7:00 pm. Open to public 7:00 pm.

**7:30pm Featured Speaker: Jillian Bishop**  
**SEED SAVING FOR ALL**

*See pages 18–21 of this book for Show Rules, Tips, and What Judges Look For. Questions? Contact show chair Angela Hennessey: angrichennessey@gmail.com (705)432-3053*

### **HORTICULTURE DIVISION**

*Multiple entries permitted per exhibitor per class if different.*

*Remember: Give the botanical and/or common name and cultivar whenever possible!*

#### **Section A – Annuals**

1. Coleus ..... 1 stem
2. Cosmos ..... 3 stems
3. Marigold (*Tagetes*) ..... 3 blooms
4. Zinnia ..... 3 blooms
5. Any other annual ..... 3 stems

#### **Section B – Tubers and Corms**

6. Autumn crocus (*Colchichum*) ..... 1 specimen
7. Begonia, tuberous ..... 1 bloom, floating in a bowl
8. Dahlia, under 10 cm ..... 1 bloom
9. Dahlia, 10 cm and over ..... 1 bloom
10. Any other tuber or corm ..... 1 bloom

#### **Section C – Perennials**

11. Chrysanthemum ..... 1 stem or spray
12. Flowering or fruited branch, shrub, or vine... 1 specimen, max. 60 cm from top of vessel
13. Hydrangea ..... 1 stem or branch
14. Ornamental grasses ..... 3 stems of same cultivar
15. Sedum, Autumn Joy ..... 1 stem with bloom
16. Sedum, any other ..... 1 stem with bloom
17. Sedum ..... 3 stems, more than one colour
18. Seed Pod ..... fresh, 3 stems
19. Aster ..... 1 stem
20. Any other perennial or biennial .. 1 bloom, stem, or spray

## Section D – Vegetables

*Plates for entries will be supplied by the Society.*

- |  |  |
|--|--|
| 21. Beet .....                         | 3 specimens, same variety  |
| 22. Carrot.....                        | 5 specimens, same variety  |
| 23. Garlic.....                        | 3 heads, same variety  |
| 24. Onion .....                        | 3 specimens, same variety  |
| 25. Potato .....                       | 3 specimens, same variety  |
| 26. Squash, summer.....                | 3 specimens, same variety  |
| 27. Squash, winter .....               | 1 specimen   |
| 28. Tomato.....                        | 3 specimens, same variety  |
| 29. Tomato, heirloom .....             | 3 specimens, same variety, named   |
| 30. Any other heirloom vegetable ..... | 3 specimens, same variety, named   |
| 31. Any other vegetable.....           | e.g. cauliflower, turnip, novelties, etc., in appropriate numbers (see <i>OJES</i> p. 108) |
| 32. Silliest looking vegetable .....   | 1 specimen, named  |

## Section E – Fruits and Nuts

*Plates for entries will be supplied by the Society.*

- |                     |             |
|---------------------|-------------|
| 33. Any fruit ..... | 3 specimens |
| 34. Any nut.....    | 3 specimens |

## Section F – Collections

- |                                       |   |
|---------------------------------------|---|
| 35. Mixed native garden flowers ..... | minimum 3 cultivars, 3 stems each, named        |
| 36. Herbs .....                       | 3 or more different herbs, cut, in water, named |

## DESIGN AND SPECIAL EXHIBITS DIVISION

### Section G – Individual Designs

*Accessories permitted unless otherwise specified.*

- |                                    |   |
|------------------------------------|---|
| 37. <i>On the Road Again</i> ..... | roadside “pick and plunk” (no accessories)  |
| 38. <i>Cornucopia</i> .....        | a display of fruits, vegetables, and flowers arranged in a basket   |
| 39. <i>Harvest Moon</i> .....      | a crescent design (a traditional line mass design—in which the line is reinforced by a mass of plant material with a rhythmic flow—in the shape of a partial circle.— <i>OJES</i> pp. 136, 144) |

## YOUTH DIVISION

- |   |  |
|---|--|
| 40. <i>It’s a Wrap</i> .....                        | 3 illustrated seed packages, with seeds, named |
| 41. <b>Design:</b> <i>Seeds of the Future</i> ..... | seed art design                                |

# Flower Show & Meeting

## October 26, 2026

Cannington Baptist Church, 60 Cameron St. W., Cannington, ON  
Entries received 6:30–7:00 pm. Open to public 7:00 pm.

### 7pm Youth Awards 7:30pm Featured Speakers: CHS Youth Members **LEARNING LESSONS FROM THE YOUTH - HANDS ON DEMOS**

#### **HORTICULTURE DIVISION**

##### **Section A – Vegetables**

*Plates for entries will be supplied by the Society.*

1. Decorative corn ..... 3 ears
2. Ornamental gourds ..... 3 specimens, different varieties
3. Pumpkin, any colour except orange 1 specimen
4. Pumpkin, orange ..... 1 specimen
5. Warty squash or pumpkin ..... 1 specimen
6. Any other vegetable ..... 1 specimen

##### **Section B – House Plants**

7. An unusual house plant ..... state why or how it's unusual

#### **DESIGN AND SPECIAL EXHIBITS DIVISION**

##### **Section C – Culinary Arts**

*If processed-type, seal must be intact. If fresh or freezer-type, must be refrigerated.*

8. Any dessert ..... prepared with Ontario apples, squash, or pumpkin
9. Jam, jelly, or conserve ..... in clear glass container, Ontario-grown produce
10. Pickles, any type ..... in clear glass container, Ontario-grown produce
11. Relish or chutney ..... in clear glass container, Ontario-grown produce
12. Salsa ..... in clear glass container, Ontario-grown produce

##### **Section D – Individual Designs**

*Accessories permitted.*

13. *Spook-tacular* ..... a carved pumpkin
14. *Ghastly* ..... a decorated uncarved pumpkin or squash
15. *Creepy Collection* ..... arrangement of dead plant material
16. *Incantation* ..... your interpretation

#### **YOUTH DIVISION**

17. **Horticulture:** ..... mini pumpkin or gourd, 1 specimen
18. **Culinary Arts:** ..... a written recipe using homegrown produce

# Design Workshops

November 16, 2026

Cannington Baptist Church, 60 Cameron St. W., Cannington, ON  
Photo Entries received 6:30–7:30 pm.

## WORKSHOPS:

**6PM 'BOTANICAL ART'** with Bert Liverance

**7:30PM 'DOGWOOD WREATH'** with Sandy Wasiluk

**Registration Fee for each workshop, pre-registration required**

Two unique opportunities to learn new skills!  
All materials provided. See website for more details.

***Photographic Prints will be displayed at the AGM on December 7th.***

## DESIGN AND SPECIAL EXHIBITS DIVISION

### Section A – Photographic Prints

*Entries may be given to any member of the photography committee until November 16, 2026.*

*Please refer to Photographic Competition Rules, p. 35. Prints may be digital or film in origin.*

- P1. Reflections
- P2. Sculpture Garden
- P3. Solitary
- P4. Red & Green
- P5. Houseplants
- P6. Vegetables
- P7. Mushrooms-Nature's Decomposer
- P8. Miniature Garden
- P9. Overgrown
- P10. Wild Weeds
- P11. Nature's Neon *Open class for 2027 Bookmark—open to all CHS Members*

### Section B – Youth Photographic Prints *(for Youth Members only)*

- Y1. It's a Bug's Life
- Y2. Natives Naturally
- Y3. Mushrooms-Nature's Decomposer



*nature is the greatest artist, and I am merely illustrating its masterpieces.*

- Maria Sibylla Merian  
Botanical artist

# Annual General Meeting

Photography Show, Awards Night

December 7, 2026

Cannington Baptist Church, 60 Cameron St. W., Cannington, ON  
Doors Open at 7:00 pm

## FEATURING: PHOTOGRAPHY SHOW

Photography Show and Prizes, 2026 Flower Show Award Presentations,  
Festive Refreshments ~ 2026 Reports and Election for Board of Directors

### DESIGN AND SPECIAL EXHIBITS DIVISION

#### Section A – Photographic Prints

See November Meeting page for complete class listing (p. 33)

Entries may be given to any member of the photography committee until **November 16, 2026**

#### Section B - Youth Photographic Prints (for Youth Members only)

See November Meeting page for complete class listing (p. 33).

Entries may be given to any member of the photography committee until **November 16, 2026**.

#### Best in Photography Show and Judge's Comments

#### *And in the Spirit of the Season ...*

- ◆ Bring an openable, decorated gift box with a gift for a senior. Gifts will be distributed to residents of Bon Air. **(No food or highly scented items, please.)**

#### **Plan Ahead! Photo Prints for 2027...**

##### **For June 2027**

- P1. Sap is Running
- P2. Preserved in Ice
- P3. Calypso Like Me (Tropical)
- P4. Freak of Nature
- P5. Wet & Wild
- P6. Spring to Life!

##### **For June 2027 YOUTH DIVISION**

- Y1. Icy Twigs
- Y2. Budding Leaves
- Y3. Zoom In (Macros)

##### **For December 2027**

- P1. Gone to Seed
- P2. Terrarium (Indoor garden)
- P3. Basilisk (Herbs)
- P4. Wild & Reckless
- P5. Happy Trails
- P6. Fields of Plenty
- P7. All Pollinators Welcome
- P8. Abstracted
- P9. Boxed In
- P10. Fruit Loops

##### **For December 2027 YOUTH DIVISION**

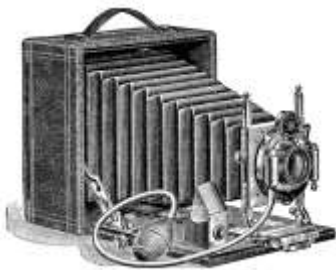
- Y1. Climbing Cucumbers
- Y2. Birds in the Garden
- Y3. Fields of Plenty

**Open Class for Dec. 2027  
Bookmark for 2028**  
*(open to all members of CHS)*  
P11. Native Dancers

# Photographic Competition Rules

1. Competition is open to all members of the Cannington Horticultural Society who are not professional photographers.
2. Entries are limited to one per person in each class.
3. Images must be taken during the previous 24 months and not previously exhibited in our society's competition.
4. All images must contain horticultural content.
5. Images may be in colour or black-and-white. For judging purposes, no distinction will be made between black and white or colour images.
6. Images may be from digital or film sources. For judging purposes, no distinction will be made between images' digital and/or film origins.
7. No Photoshop or significant retouching is allowed. Cropping is allowed.
8. Images should be no larger than 4" x 6" and no smaller than 4" x 4". Prints must be mounted on a 5" x 7" piece of board, white in colour. No mats or frames are allowed.
9. Image for bookmark *must* be vertical/portrait format. For judging purposes, a template will be used the exact size and shape of the CHS annual bookmark, 2.5" wide x 8" high. The bookmark class is open to all CHS members, including Youth members.
10. Entries will be judged on:
  - a. Horticultural value 40%
  - b. Photographic value 40%
  - c. General appeal 20%
11. Each entry should be identified on the reverse with class number, class title, exhibitor's name, and exhibitor's member number.

**Note:** Identification should be in the same orientation as the photograph is to be viewed. Please do not use a flower show entry tag.
12. Entries that do not conform to rules will be disqualified.



*“The camera is an instrument that teaches people how to see without a camera.”*

*- Dorothea Lange*

# Secretary's Annual Report - 2025

The Cannington Horticultural Society's 50th anniversary was truly a year to remember. Beyond an action-packed schedule of activities, we navigated a variety of environmental challenges that kept us busy in our gardens.

Our speaker program remained a success, covering a wide range of gardening topics. Despite delays from an ice storm, Seedy Saturday was an overwhelming success, thanks to our valued partnership with the Georgina-Brock club. We also held engaging workshops on floral arrangements and grapevine spheres, and enjoyed an educational tour of Richter's Herbs. Our annual plant sale at Brock 2020 Gardens saw a great turnout for our selection of donated plants.

In the summer, we celebrated our milestone with a 'Golden Garden Party' at MacLeod Park, where the community gathered to share stories and learn about native gardening, historical/pioneer gardens, composting demo and a wild flower headband workshop. Three of our clubs expert floral designers each did a beautiful flower arrangement which were given away at the close of the party. Refreshments and a cake decorated with fresh flowers added to the festive day. To commemorate this anniversary, 'The Heart Bench', designed by blacksmith artist Mark Puigmarti, and featuring our club flower emblem Bleeding Hearts, was installed near our civic gardens on August 1st for the whole community to enjoy.

Our community projects and partnerships included:

- Face-painting for kids at the Canada Day celebration
- Earth Day cleanup
- The planting of 100 native trees and shrubs in MacLeod Park
- \$700 Brock High School bursary awarded to Bryden Parliament
- \$200 donation to the Sunderland Agricultural Fair
- CHS Presentation (history and activities) to the Cannington Historical club
- "Thumbs Up" recognition for eight eye catching private gardens in Sunderland and Cannington
- Civic beautification - 18 main street planter boxes and nine civic gardens

Finally, our Youth Program introduced several new initiatives, including hands-on activities with a focus on 'The Bigger Picture' -We're All in this Together' and the establishment of a youth executive.

Despite the cold, snow, ice, heat, and drought, it certainly was a wonderful Golden Anniversary year.

*Kelly Gibson*

# Financial Statement 2025

	<u>2025</u>	<u>2024</u>
<b>Income</b>		
Donations from members	460.00	595.00
Total Fundraising	3,573.50	2,580.00
Total Membership	4,570.08	4,994.00
OMAFRA	1,000.00	1,000.00
Plant sale/auction	2,145.00	2,249.00
Youth Challenge Grant	0.00	525.00
<b>Total Income</b>	<u>12,401.10</u>	<u>13,192.09</u>
<b>Expense</b>		
Advertising Bookmarks Posters	195.72	542.07
AGM Awards	204.64	396.29
Banking Charges	72.50	207.37
Beautification	6,650.05	2,153.07
Bulbs Purchases	1,228.31	0.00
District & OHA dues	866.60	1,192.96
Donations	335.00	440.00
Entertainment & Food	779.96	395.00
Gifts	100.00	143.15
Total Grants	700.00	700.00
Hall Rental	560.00	360.00
Judges Fees	600.00	585.00
Member Initiative	437.00	0.00
Office Expenses	0.00	325.58
Printing exc. Advertising	40.68	4.80
Speaker Fees	850.00	925.00
Website	656.98	0.00
Total Workshops	1,323.95	1,558.78
Year books	655.97	754.28
Total Youth Programs	<u>773.93</u>	<u>925.86</u>
<b>Total Expense</b>	<u>17,031.29</u>	<u>11,981.02</u>
<b>Net Income</b>	<u><u>-4,630.19</u></u>	<u><u>1,211.07</u></u>
<b>Bank Balance</b>	<b><u>2025</u></b>	<b><u>2024</u></b>
Opening Balance as of Oct 1st	17,479.29	15,284.50
Closing Balance as of Sept 30th	12,918.28	17,479.29

Treasurer: Justine Polsinello    Reviewers: Angela Hennessey, Christine Reid



## Congratulations to the 2025 'Thumbs Up Garden Winners'

Eight private gardens are selected each year and winners receive a year membership - Welcome to the club! Get ready for the 2026 season ... new gardens will be selected!



Winners: Alex Campbell, Sunderland



James MacNaughton, Sunderland



Graeme Powell, Sunderland



Winners: Tammy Kindler, Cannington



Stan Wojciechowski, Cannington



David Gribble, Sunderland area



Far left photo:  
John Mirabelli,  
Cannington

Left: Cheryl Matheson  
Cannington

# Thank you to our Business and Community Sponsors

**Brock 2020 Gardens**  
**705 341 0847**  
**199 Laidlaw St. N. Cannington**  
Specialty & Gourmet fresh vegetables, Heirloom seeds & plants  
Fresh Cut Flowers & Herbs



Chemical Free Non GMO

**Campbell's**  
**TV & APPLIANCES**  
Warren & Dianne Campbell  
**705-432-2071**  
20 Cameron St. E, Cannington, Ontario L0E 1E0

Cannington Historical Society  
Historical Museum  
Blacksmith & Carriage Shop  
Meetings, events  
Preserving the past  
Protecting the present  
Enlightening the future  
New Members welcome  
canningtonhistoricalsociety@hotmail.ca  
www.canningtonhistoricalsociety.ca



**Hudson** 11 Cameron Street W, PO Box 520  
HUDSON HENDERSON INSURANCE BROKERS Cannington, ON L0E 1E0  
Toll-Free: 888-522-4999

**Kari McCabe**  
RIB (ON) CIP  
Office Manager

705-432-2314 EXT 1488 | 888-333-4507 | kari@hudsonhenderson.com

**CHS Photography Classes** - Our photography classes are offered twice a year. Look for this year's classes on pages 29 and 33. Instructions and how to enter your photos maybe found on page 35 of this yearbook. Get clicking and enter your pics!



Above: 'Forest Bathing' by Karen Sproxtton




Right: 'Bug Off' by Catharine Brouwer (Youth Class)



Above: 'Devil in the Details' by Deb Hadfield

# Thank you to our Corporate and Community Sponsors



planet pals

---

**Dan Galea**  
dangalea@xplornet.ca

**THE Sunflower FARM**


THE SUNFLOWER FARM



INFO@THESUNFLOWERFARM.CA

THESUNFLOWERFARM.CA

416 316 9543 BEAVERTON, ON



**Forest View Native Plants**

Michelle O'Brien

forestviewnativeplants.com  
nativeplantsordering@gmail.com



**EDIBLE LANDSCAPING & GARDEN SERVICES**  
by O'Brien & Family

*Grow food where you live.*

- Food forests • Backyard orchards
- Kitchen gardens • Soil regeneration
- Pollinator & native plant systems

*Resilient landscapes designed to nourish your family and the land.*

(905) 743-9042  
obrienandfamily.com  
Email: todd@obrienandfamily.com



Making Cannington a great place to live!

For membership information call Michael Jones: 705 330 1892



**Brock Community Health Centre**

Together we're building a healthier community

39 Cameron St. W., P.O. Box 69, Cannington, Ontario L0E 1E0  
T. 705.432.3322 | F. 705.426.4215 | www.brockchc.ca



**Laurie Benson**  
Internationally Certified Advanced  
500 hour Yoga Instructor

705-432-2515  
text 705-457-0141

**CHANDRA YOGA** No Pain, No Pain!



**Teaching. Growing. Research**

**J.P. Montague**  
Holistic Soil Consultant

**Nicole Brouwer**  
Farm Manager

[www.theglenroadorganics.com](http://www.theglenroadorganics.com)  
[theglenroadinfo@gmail.com](mailto:theglenroadinfo@gmail.com)

Mike Cicerella  
905 244 1798

*Check us out on  
Facebook, Instagram  
& TikTok*

[www.mikeesmushies.com](http://www.mikeesmushies.com)  
[mikeesgourmetmushies@gmail.com](mailto:mikeesgourmetmushies@gmail.com)



**JAN MORRISON**  
SALES REPRESENTATIVE



**KIM HALES**  
BROKER

**RE/MAX**  
Country Lakes Realty Inc. Brokerage

705 - 432 - 2905

CELL: 705-341-7802  
[Ejanm@sympatico.ca](mailto:Ejanm@sympatico.ca)  
[www.JanMorison.com](http://www.JanMorison.com)

CELL: 705-341-7885  
[Ekimhales@bell.net](mailto:Ekimhales@bell.net)  
[www.KimHales.ca](http://www.KimHales.ca)



**Bill Ransberry**

23800 Hwy#12  
P.O. Box 358,  
Sunderland, Ontario  
L0C 1H0

Bus. 705-357-2211  
Fax. 705-357-1222

[sunderlandfeed@zing-net.ca](mailto:sunderlandfeed@zing-net.ca)

*Skinner's*  
**Cannington**  
**FOODLAND**



**Rod Skinner**  
Owner

35 Cameron St. E  
Cannington, ON L0E 1E0

Phone: 705-432-3398  
Email: [rodskinner65@icloud.com](mailto:rodskinner65@icloud.com)

**Regan Laframboise RMT**  
Sunderland-Brook Community Health Center  
26 Church St. S.  
Sunderland, ON L0C 1H0  
(705) 928-0641  
Registered Massage Therapist

*Massage  
Therapy—  
A natural  
approach to  
good health*

**A I I A bout H air**

*Personalized  
Hair Care & Styling*

*Thelma Seymore*

14 Laidlaw St. S.  
Cannington, ON L0E 1E0      705 432 3273



[bloomsonthego@yahoo.com](mailto:bloomsonthego@yahoo.com)  
342 Simcoe St. Beaverton

Thank you to our Corporate and Community Sponsors

2026 Corporate Business Partners

## Brelmar Veterinary Clinic

Dr. Debbie Davies  
& Staff

S16525 Hwy. 12, Sunderland, Ontario  
Monday to Friday 8am-5pm

705 357 3184



Serving Cannington & Sunderland

*Myles G. O'Riordan Funeral Director/Owner*

705 432 2672 [director@thornefuneralhome.ca](mailto:director@thornefuneralhome.ca)

109 Laidlaw St. Cannington

98 River St. Sunderland

**Ben's  
Pharmacy**

347 Simcoe Street  
Beaverton, Ontario  
Phone 705.426.5300

Powered by Care 

---

*Your healthcare professionals  
Specializing in nutrition,  
wellness and compliance packaging*

---

[www.benspharmacy.ca](http://www.benspharmacy.ca)



Grant House  
Bed & Breakfast  
**YOUR HOME  
AWAY FROM  
HOME**

Arrive a Guest....  
Leave a Friend

705 426 1296



447 North Street, Beaverton, Ontario L0K 1A0  
granhouse447@gmail.com    www.granhousebedandbreakfast.com

## The Polsinello Real Estate Team



TRUSTED BY 5,000+ FAMILIES

**UNLOCK EXCLUSIVE LISTING STORIES & SOLD DATA**

Go Beyond the Photos. Get the Full Picture.

Phone: (905) 830-9111 | Website: GreaterTorontoHomePros.com



## The Thrift Hub Inc.

Donations appreciated

33 Cameron St. E.  
Cannington, ON  
L0E 1E0

**705 964 2040**

Selling gently used clothing, housewares,  
toys, books & more

2026 Corporate Business Partners



[WWW.CANNINGTONHAUNT.COM](http://WWW.CANNINGTONHAUNT.COM)



**Paul South**

**785 Durham Regional Rd. 10  
Sunderland, ON L0C 1H0  
705 340 2327**

**[brockcanoeandpaddle@gmail.com](mailto:brockcanoeandpaddle@gmail.com)**

Thomas M. Mangan

Angela MacEachern-Teel

*Funeral Directors & Owners*

*Mangan*  
*of Beaverton*

**MANGAN FUNERAL HOME**

(Beaverton Funeral Home Ltd.)

705-426-5777

1-800-463-8627

332 Osborne Street, Box 590, Beaverton, Ontario L0K 1A0

[www.manganfuneralhome.com](http://www.manganfuneralhome.com) [info@manganfuneralhome.com](mailto:info@manganfuneralhome.com)

**Thank you** to our Corporate and Community Sponsors for their donations that assist the Cannington Horticultural Society to achieve its goal of beautifying the villages of Cannington and Sunderland. We sincerely appreciate your support.